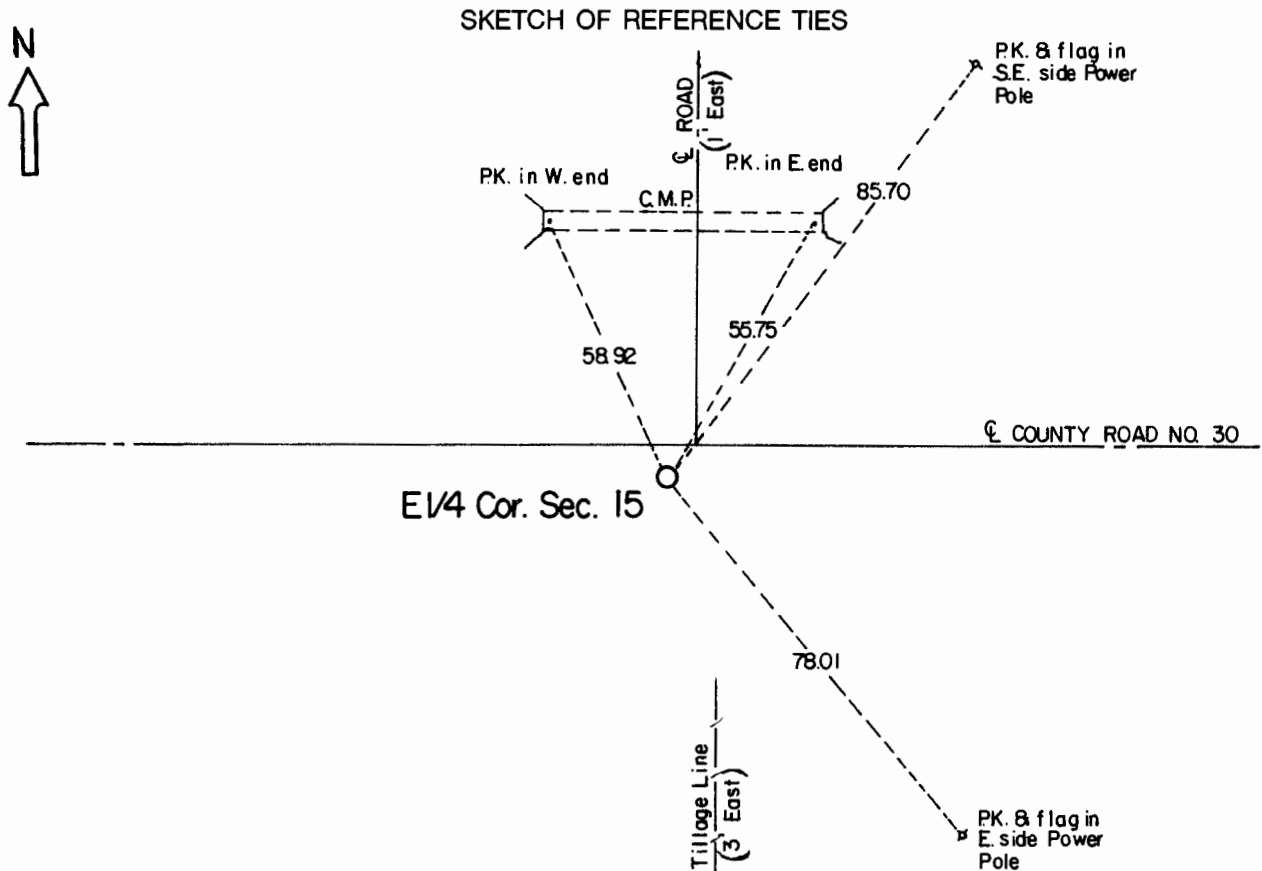


CERTIFICATE OF LOCATION OF GOVERNMENT CORNER

East Quarter Corner of Section **15** , Township **107** , Range **41** 5th P.M.
STATE OF MINNESOTA, County of Murray.

Statement: Aug. 31, 1989 - Found a railroad spike 1 foot below the surface. No additional evidence was found. Placed a Minnesota Department of Transportation Aluminum Capped Iron Monument.



Statement of evidence relative to this corner location is on the back of page.

I hereby certify that this document and the data contained herein was prepared by me or under my direct supervision and that I am a duly Registered Land Surveyor under the laws of the State of Minnesota.

Duane A. Bonnema Nov 6, 1989
Duane A. Bonnema Date

Minnesota Registration No. 14895

OFFICE OF THE COUNTY RECORDER
COUNTY OF MURRAY **NOV 15 1989**

I hereby certify that this document was filed in the County Recorder's office at ___ M. on the ___ day of ___ A.D., 19__

County Recorder *James U. Johnson*

By _____, Deputy
DOCUMENT NO. _____